

Smoothwall Cloud Reporting

Fast, multi-stakeholder reporting on your Cloud Filter.



Overview

Smoothwall Cloud Reporting is a multi-stakeholder reporting capability easily accessible from your product portal.

It enables IT admins, their teams, DSLs and anyone with an authorised safeguarding remit, including school leaders and governors, to run reports and investigate any safeguarding issues that arise. DSLs no longer need to rely on IT for data, saving both parties valuable time.

Reports can be accessed from anywhere, at any time, on any device - speeding up access to critical behaviour insights at the point of need. This can be especially important when dealing with out of hours safeguarding alerts.

All reports and graphs are exportable from the system for easy sharing and/or inclusion in larger reports.

Key Capabilities

Fast and simple to use

Reports are fast to access and easy to read including a range of graphs or fast clarity on incidents.

90-day storage

Stores your filter data safely in the cloud for 90 days. With longer storage packages also available if needed.

View latest data

Syncs and collects data from on-premise devices every 15 minutes from cloud filtered and devices every 5 minutes.

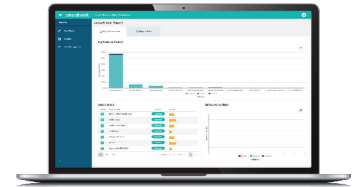
Export data

Data and graphs can be exported for use in reports or presentations.

Report types

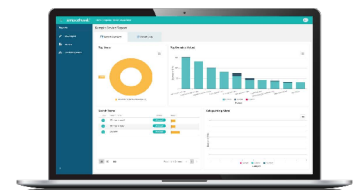
User report

Use this report when you want to know more about a specific user. See their most-visited domains, all of the searches they have made within the specified time period and any safeguarding concerns contained in the data.



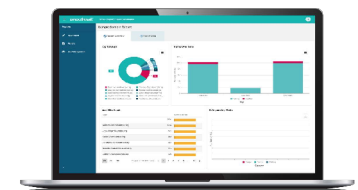
Device report

Use this report when you know the IP address of a device on which concerning activity has taken place. Returns insightful data about the users who have accessed that device.



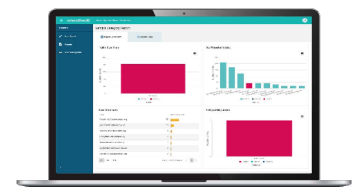
Domain report

Use this report to find out who has visited a specific domain over a given time period and what safeguarding alerts were triggered.




Category report


Use this report to search for any user activity within a specified category. Categories may include self-harm, suicide, drugs, abuse and others.



Kontakta oss för mera information:
Smoothwall Cloud Reporting

AIES AB är Svensk distributör till Smoothwall

 +46 8-18 07 05 In Sweden 08-18 07 05

 smoothwall@aies.se

 www.aies.se/smoothwall